

REVIZIJSKI LIST	
BR. REVIZIJE	OPIS PROMENA
1/1	IZOŠTA

1

2

3

4

5

6

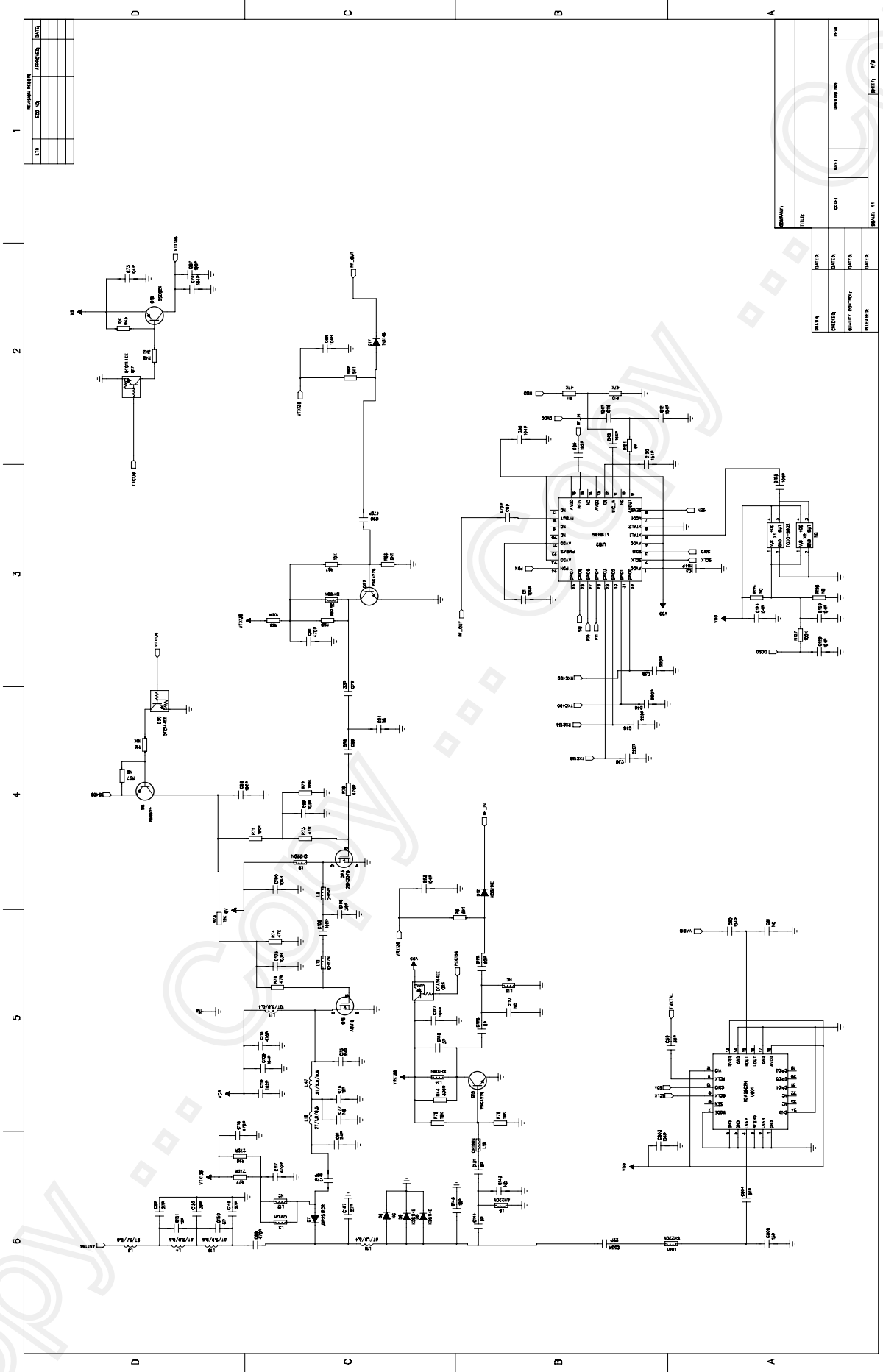
REVIZIJSKI LIST	
BR. REVIZIJE	OPIS PROMENA
1/1	IZOŠTA

REVIZIJSKI LIST	
BR. REVIZIJE	OPIS PROMENA
1/1	IZOŠTA

REVIZIJSKI LIST	
BR. REVIZIJE	OPIS PROMENA
1/1	IZOŠTA

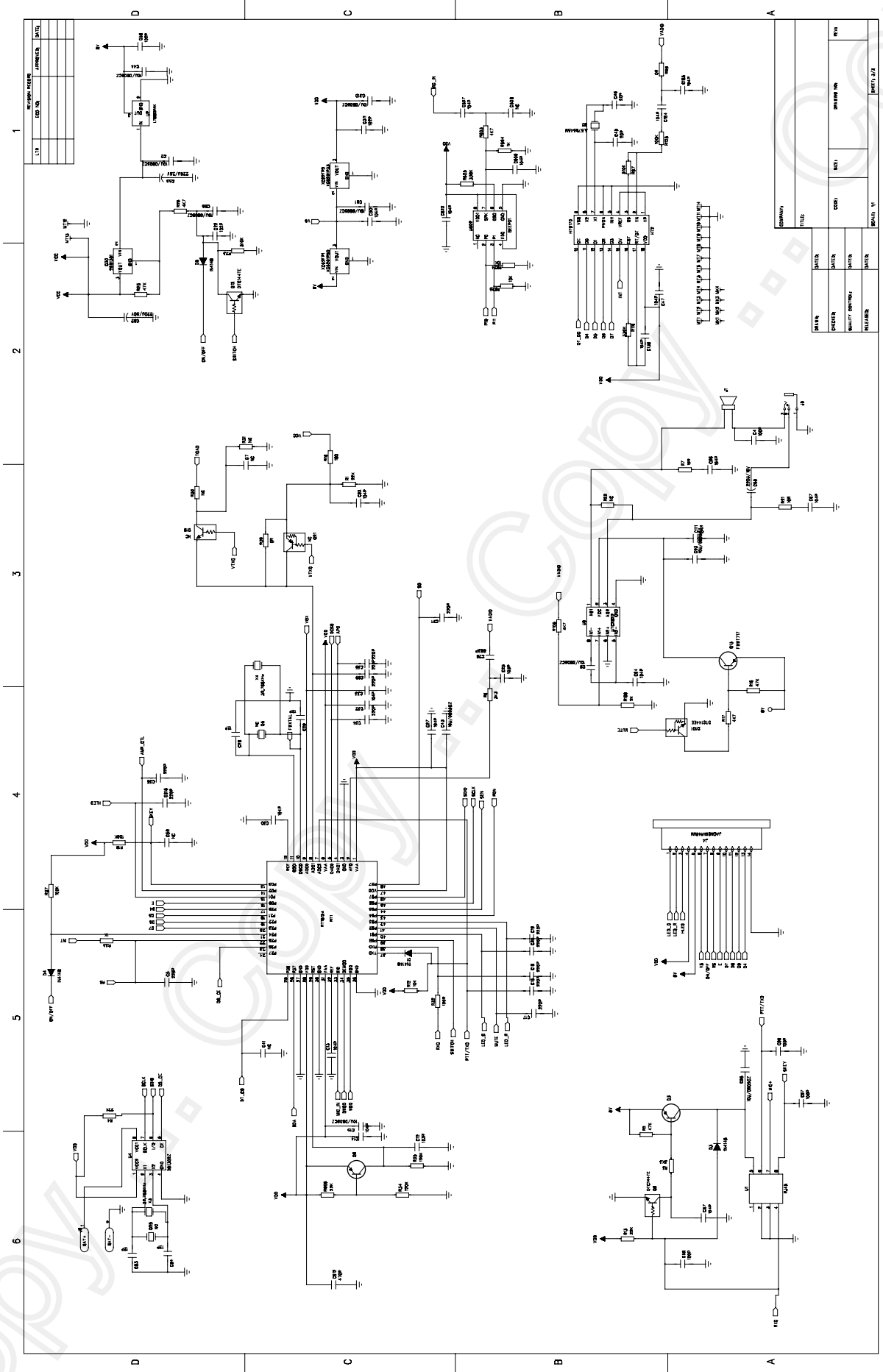
REVIZIJSKI LIST	
BR. REVIZIJE	OPIS PROMENA
1/1	IZOŠTA

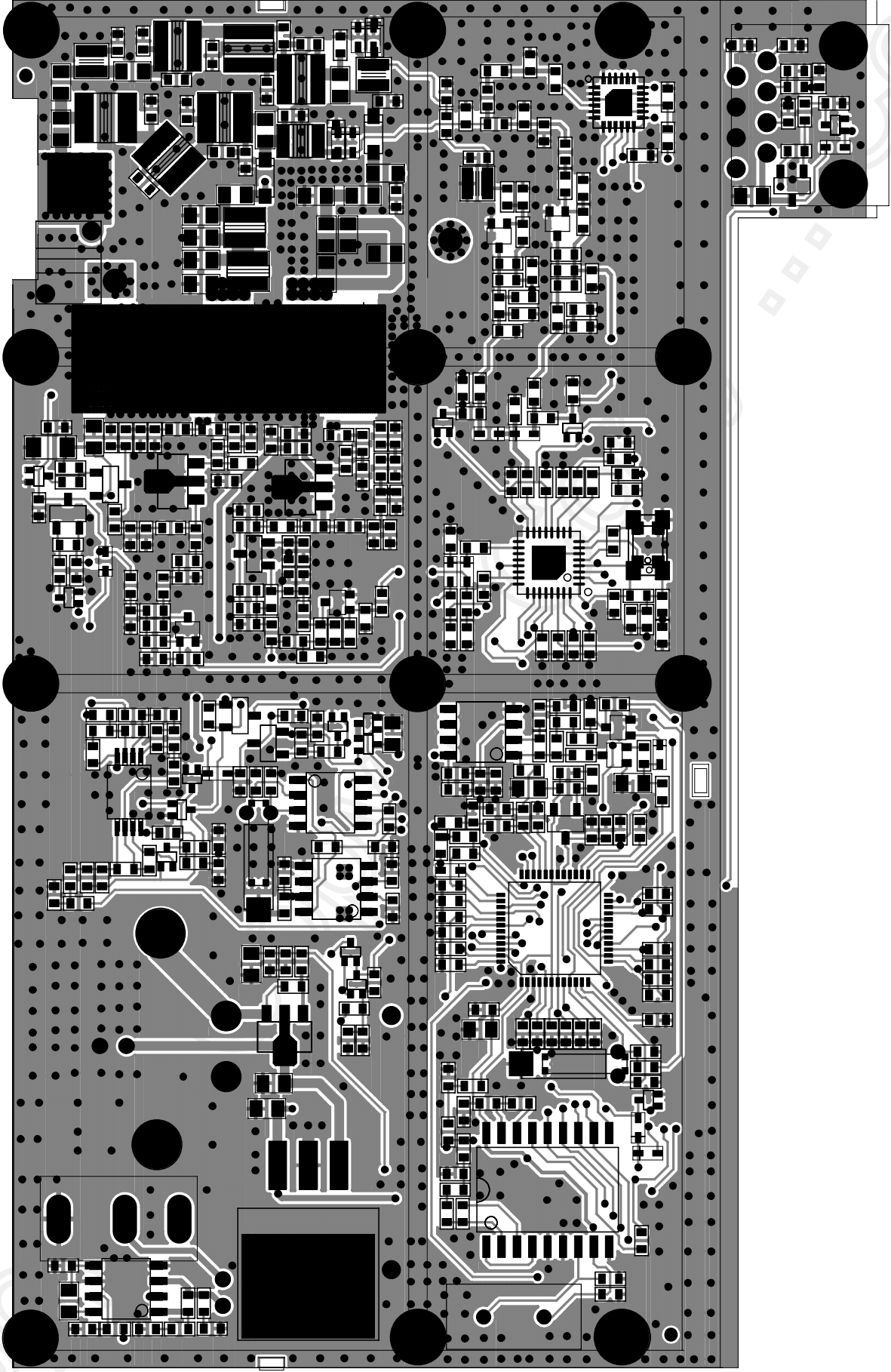
REVIZIJSKI LIST	
BR. REVIZIJE	OPIS PROMENA
1/1	IZOŠTA

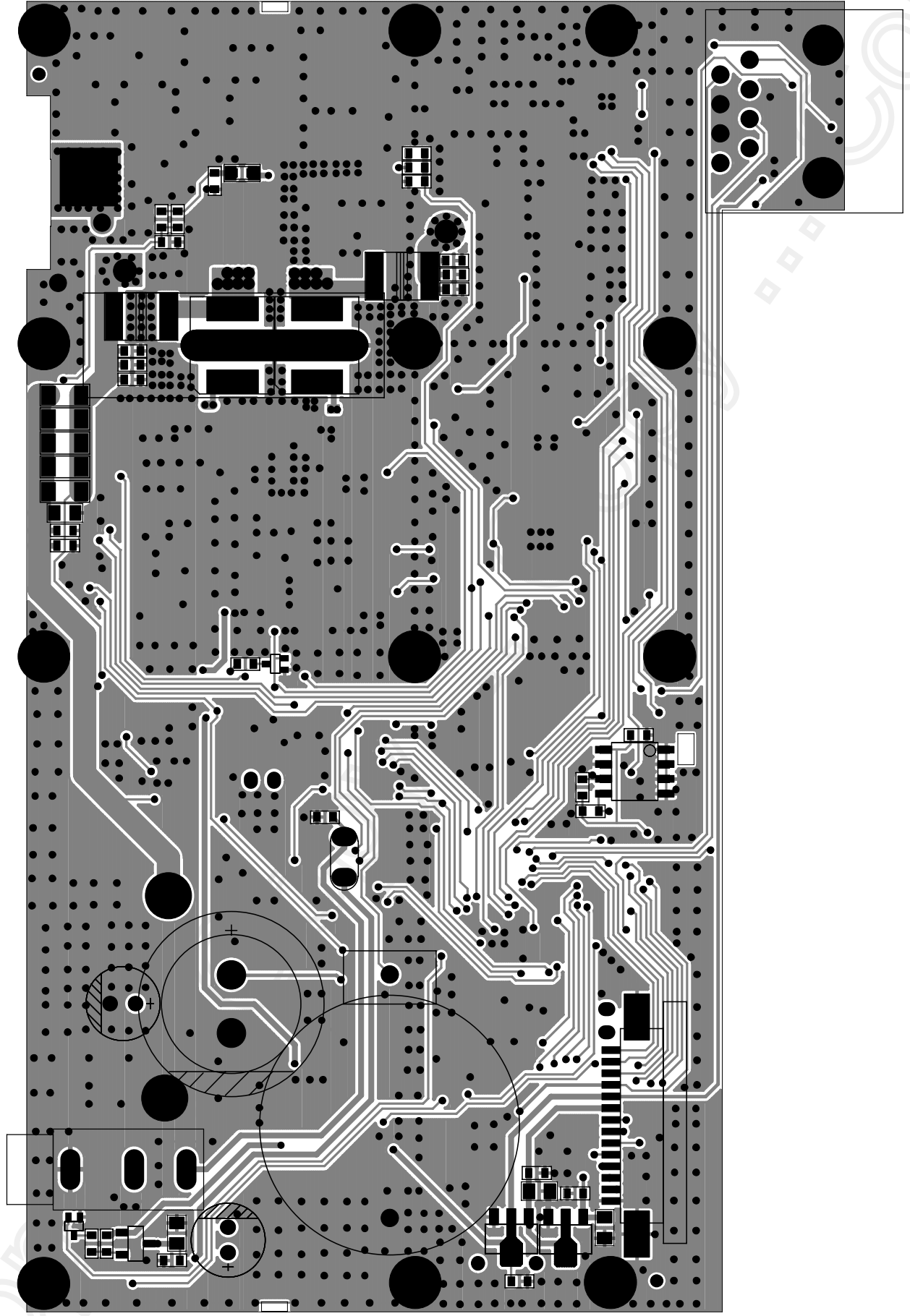


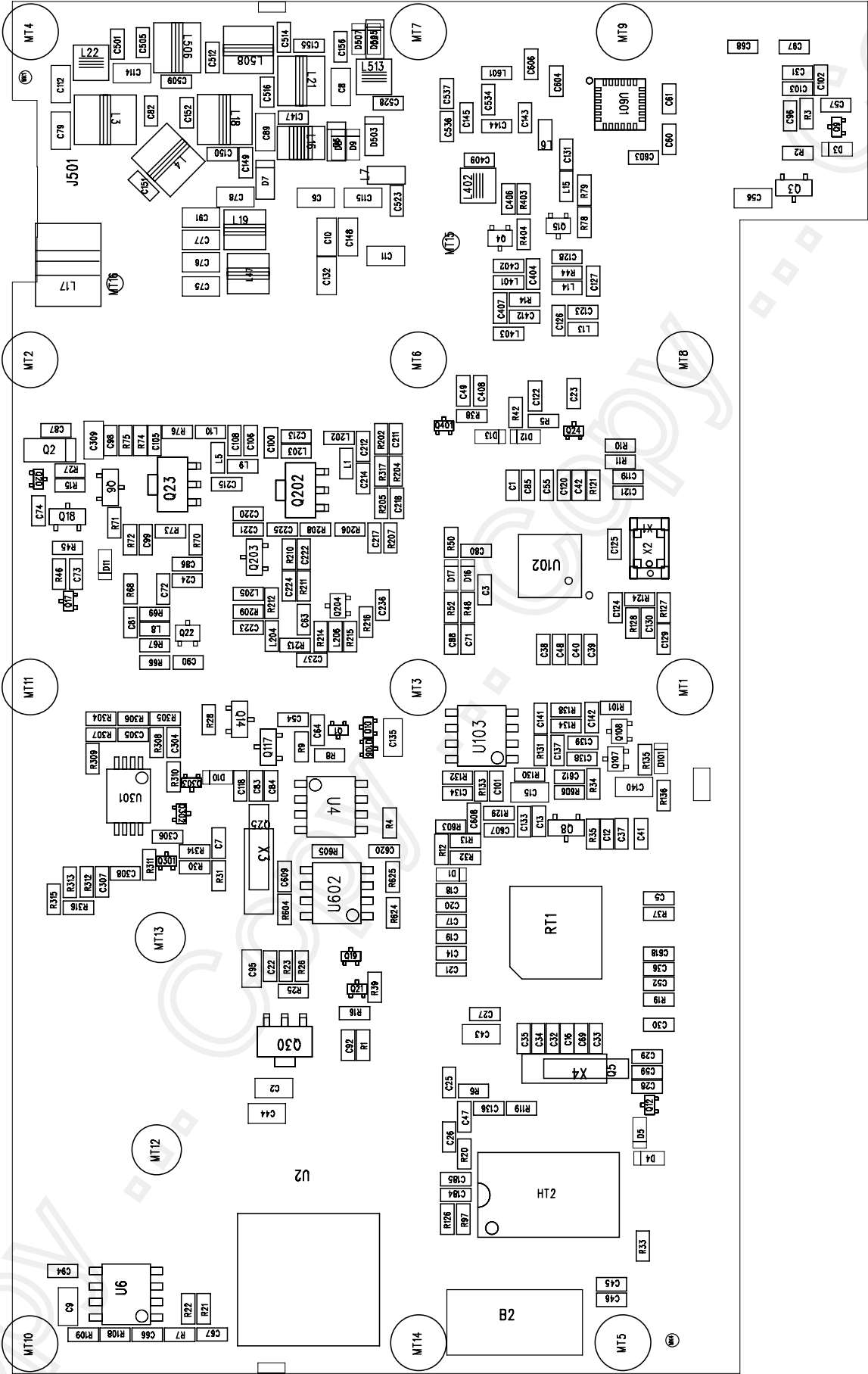
REVISION HISTORY	
REV	DESCRIPTION

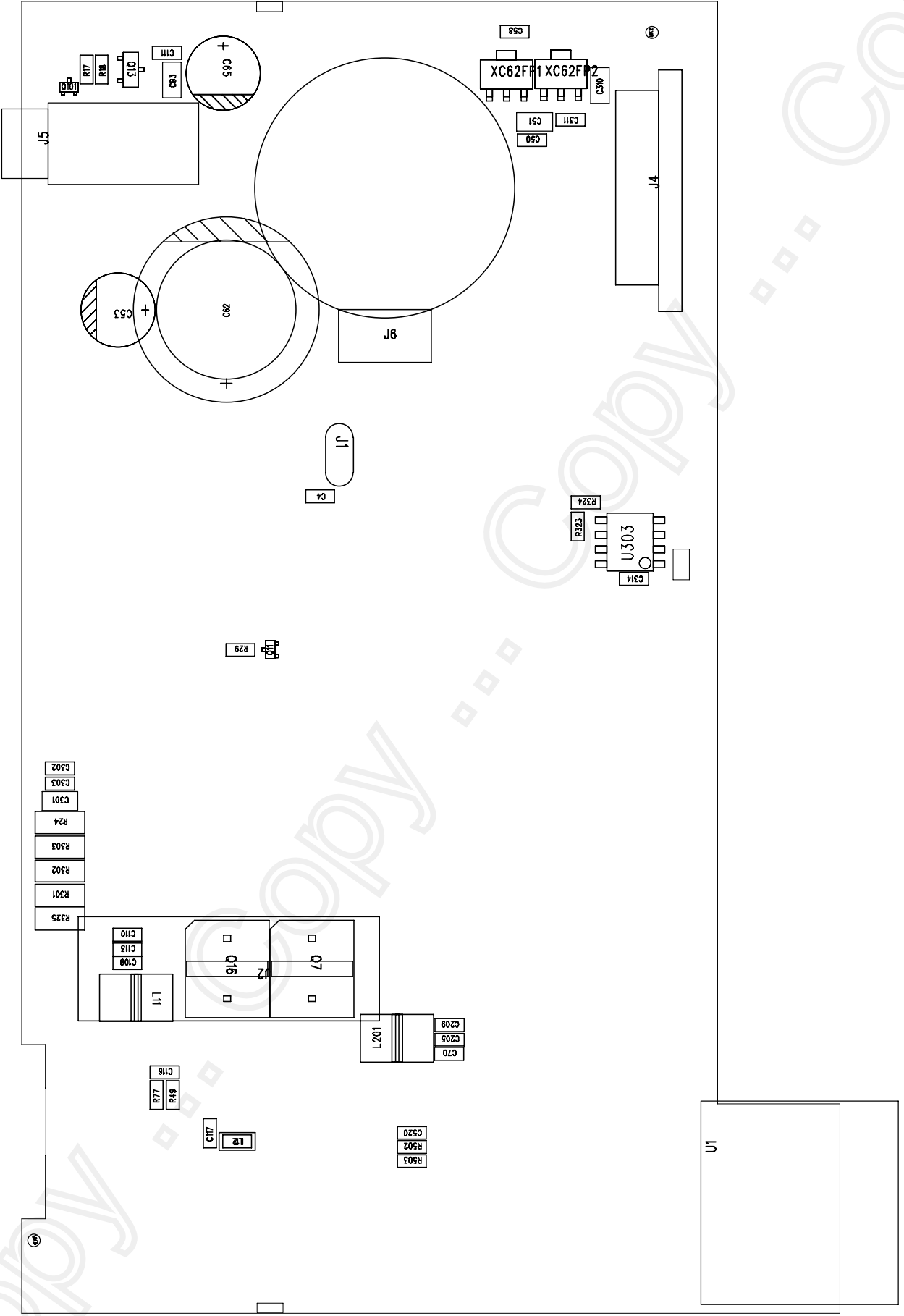
PROPERTY	
FILE	
DATE	
DESIGNER	
DESIGN APPROVAL	
REVISION	
SCALE	1:1
REV	











Item	Qty	PART-TYPE	Reference	PCB-TYPE
1	D1	1N4148	1N4148	SOD-523
2	D3	1N4148	1N4148	SOD-523
3	D4	1N4148	1N4148	SOD-523
4	D5	1N4148	1N4148	SOD-523
5	D10	1N4148	1N4148	SOD-523
6	D11	1N4148	1N4148	SOD-523
7	D12	1N4148	KDS114E	SOD-523
8	D13	1N4148	KDS114E	SOD-523
9	D16	1N4148	1N4148	SOD-523
10	D17	1N4148	1N4148	SOD-523
11	Q2	1N4148 1206	ZMM 5V1	D1206
12	Q107	1SS372	1SS372	SOT-323
13	D101	1SS389	1SS389	SOD-523
14	U303	24C08	24C64	SOP-8
15	Q3	2SB624	2SB624	SOT-23
16	Q6	2SB624	2SB624	SOT-23
17	Q8	2SB624	2SB624	SOT-23
18	Q13	2SB624	FMMT717	SOT-23
19	Q14	2SB624	2SB624	SOT-23
20	Q18	2SB624	2SB624	SOT-23
21	Q117	2SB624	2SB624	SOT-23
22	Q4	2SC4226	2SC4226	SOT-323
23	Q15	2SC4226	2SC4226	SOT-323
24	Q22	2SC4226	2SC4226	SOT-323
25	Q204	2SC4226	2SC4226	SOT-323
26	Q108	2SD2351	2SD2351	SOT-323
27	Q23	2SK3078	2SK3078	SOT-89
28	Q202	2SK3078	2SK3078	SOT-89
29	Q7	A9M15	A9M15	A9M15
30	Q16	A9M15	A9M15	A9M15
31	J501	ANT-R1500		ANT-R1500
32	B2	B-X3. 6864MC	3. 579545M	X3. 6864MC
33	D2	BA592	NC	SOD-323
34	D6	BA592	NC	SOD-323
35	D7	BA592A	BA592	SOD-123
36	D503	BA592A	BA592	SOD-123
37	U602	BEEP01	BEEP01	SOP-8
38	C1	C-0603	104P	C0603
39	C3	C-0603	104P	C0603
40	C4	C-0603	100P	C0603
41	C5	C-0603	220P	C0603
42	C7	C-0603	NC	C0603
43	C12	C-0603	103P	C0603
44	C13	C-0603	104P	C0603
45	C14	C-0603	104P	C0603
46	C16	C-0603	220P	C0603
47	C17	C-0603	220P	C0603
48	C18	C-0603	220P	C0603
49	C19	C-0603	220P	C0603
50	C20	C-0603	220P	C0603

Item	Qty	PART-TYPE	Reference	PCB-TYPE
51	C21	C-0603	220P	C0603
52	C22	C-0603	102P	C0603
53	C23	C-0603	104P	C0603
54	C24	C-0603	NC	C0603
55	C25	C-0603	103P	C0603
56	C26	C-0603	683P	C0603
57	C27	C-0603	104P	C0603
58	C28	C-0603	12P	C0603
59	C29	C-0603	12P	C0603
60	C30	C-0603	104P	C0603
61	C31	C-0603	102P	C0603
62	C32	C-0603	104P	C0603
63	C33	C-0603	220P	C0603
64	C34	C-0603	220P	C0603
65	C35	C-0603	220P	C0603
66	C36	C-0603	220P	C0603
67	C37	C-0603	220P	C0603
68	C38	C-0603	220P	C0603
69	C39	C-0603	220P	C0603
70	C40	C-0603	220P	C0603
71	C41	C-0603	NC	C0603
72	C42	C-0603	104P	C0603
73	C45	C-0603	20P	C0603
74	C46	C-0603	20P	C0603
75	C47	C-0603	104P	C0603
76	C48	C-0603	220P	C0603
77	C49	C-0603	104P	C0603
78	C50	C-0603	104P	C0603
79	C52	C-0603	NC	C0603
80	C54	C-0603	104P	C0603
81	C55	C-0603	104P	C0603
82	C57	C-0603	104P	C0603
83	C58	C-0603	102P	C0603
84	C59	C-0603	30P	C0603
85	C60	C-0603	104P	C0603
86	C61	C-0603	NC	C0603
87	C63	C-0603	12P	C0603
88	C64	C-0603	104P	C0603
89	C66	C-0603	104P	C0603
90	C67	C-0603	104P	C0603
91	C68	C-0603	100P	C0603
92	C69	C-0603	220P	C0603
93	C70	C-0603	470P	C0603
94	C71	C-0603	104P	C0603
95	C72	C-0603	33P	C0603
96	C73	C-0603	104P	C0603
97	C74	C-0603	104P	C0603
98	C80	C-0603	470P	C0603
99	C81	C-0603	470P	C0603
100	C82	C-0603	27P	C0603

Item	Qty	PART-TYPE	Reference	PCB-TYPE
101	C83	C-0603	12P	C0603
102	C84	C-0603	12P	C0603
103	C85	C-0603	102P	C0603
104	C86	C-0603	5R6	C0603
105	C87	C-0603	100P	C0603
106	C88	C-0603	104P	C0603
107	C90	C-0603	470P	C0603
108	C92	C-0603	104P	C0603
109	C94	C-0603	104P	C0603
110	C96	C-0603	100P	C0603
111	C97	C-0603	100P	C0603
112	C98	C-0603	102P	C0603
113	C99	C-0603	103P	C0603
114	C100	C-0603	104P	C0603
115	C101	C-0603	104P	C0603
116	C102	C-0603	NC	C0603
117	C105	C-0603	103P	C0603
118	C106	C-0603	24P	C0603
119	C108	C-0603	102P	C0603
120	C109	C-0603	104P	C0603
121	C110	C-0603	102P	C0603
122	C111	C-0603	104P	C0603
123	C113	C-0603	470P	C0603
124	C116	C-0603	470P	C0603
125	C117	C-0603	470P	C0603
126	C118	C-0603	104P	C0603
127	C119	C-0603	104P	C0603
128	C120	C-0603	154P	C0603
129	C121	C-0603	104P	C0603
130	C122	C-0603	22P	C0603
131	C123	C-0603	NC	C0603
132	C124	C-0603	104P	C0603
133	C125	C-0603	100P	C0603
134	C126	C-0603	8P	C0603
135	C127	C-0603	104P	C0603
136	C128	C-0603	5P	C0603
137	C129	C-0603	104P	C0603
138	C130	C-0603	104P	C0603
139	C131	C-0603	8P	C0603
140	C133	C-0603	104P	C0603
141	C134	C-0603	104P	C0603
142	C136	C-0603	104P	C0603
143	C137	C-0603	102P	C0603
144	C138	C-0603	104P	C0603
145	C139	C-0603	223P	C0603
146	C141	C-0603	223P	C0603
147	C142	C-0603	102P	C0603
148	C143	C-0603	NC	C0603
149	C144	C-0603	3P	C0603
150	C145	C-0603	18P	C0603

Item	Qty	PART-TYPE	Reference	PCB-TYPE
151	C147	C-0603	27P	C0603
152	C149	C-0603	27P	C0603
153	C150	C-0603	9P	C0603
154	C151	C-0603	24P	C0603
155	C152	C-0603	33P	C0603
156	C155	C-0603	2P5	C0603
157	C156	C-0603	3P	C0603
158	C184	C-0603	104P	C0603
159	C185	C-0603	104P	C0603
160	C205	C-0603	104P	C0603
161	C209	C-0603	102P	C0603
162	C211	C-0603	103P	C0603
163	C212	C-0603	102P	C0603
164	C213	C-0603	470P	C0603
165	C214	C-0603	18P	C0603
166	C215	C-0603	104P	C0603
167	C217	C-0603	103P	C0603
168	C218	C-0603	102P	C0603
169	C220	C-0603	NC	C0603
170	C221	C-0603	30P	C0603
171	C222	C-0603	470P	C0603
172	C223	C-0603	102P	C0603
173	C224	C-0603	5P	C0603
174	C225	C-0603	5R6	C0603
175	C236	C-0603	470P	C0603
176	C237	C-0603	470P	C0603
177	C302	C-0603	104P	C0603
178	C303	C-0603	102P	C0603
179	C304	C-0603	102P	C0603
180	C305	C-0603	470P	C0603
181	C306	C-0603	470P	C0603
182	C307	C-0603	470P	C0603
183	C308	C-0603	470P	C0603
184	C311	C-0603	102P	C0603
185	C314	C-0603	104P	C0603
186	C402	C-0603	4P	C0603
187	C404	C-0603	104P	C0603
188	C406	C-0603	6P	C0603
189	C407	C-0603	5P	C0603
190	C408	C-0603	4P	C0603
191	C409	C-0603	NC	C0603
192	C412	C-0603	NC	C0603
193	C501	C-0603	56P	C0603
194	C505	C-0603	1P5	C0603
195	C509	C-0603	4P	C0603
196	C512	C-0603	6P	C0603
197	C514	C-0603	1P5	C0603
198	C516	C-0603	2P	C0603
199	C520	C-0603	470P	C0603
200	C523	C-0603	470P	C0603

Item	Qty	PART-TYPE	Reference	PCB-TYPE
201	C528	C-0603	6P	C0603
202	C534	C-0603	22P	C0603
203	C536	C-0603	8P	C0603
204	C537	C-0603	NC	C0603
205	C603	C-0603	104P	C0603
206	C604	C-0603	51P	C0603
207	C606	C-0603	15P	C0603
208	C607	C-0603	104P	C0603
209	C608	C-0603	NC	C0603
210	C609	C-0603	104P	C0603
211	C612	C-0603	470P	C0603
212	C618	C-0603	220P	C0603
213	C620	C-0603	104P	C0603
214	R101	C-0603	223P	C0603
215	C2	C-0805	10U/0805CZ	C0805
216	C6	C-0805	4P	C0805
217	C8	C-0805	470P	C0805
218	C9	C-0805	10U/0805CZ	C0805
219	C10	C-0805	8P	C0805
220	C11	C-0805	24P	C0805
221	C15	C-0805	10U/0805CZ	C0805
222	C43	C-0805	10U/0805CZ	C0805
223	C44	C-0805	10U/0805CZ	C0805
224	C51	C-0805	10U/0805CZ	C0805
225	C56	C-0805	10U/0805CZ	C0805
226	C75	C-0805	30P	C0805
227	C76	C-0805	24P	C0805
228	C77	C-0805	NC	C0805
229	C78	C-0805	100P	C0805
230	C79	C-0805	102P	C0805
231	C89	C-0805	470P	C0805
232	C91	C-0805	24P	C0805
233	C93	C-0805	10U/0805CZ	C0805
234	C95	C-0805	10U/0805CZ	C0805
235	C112	C-0805	9P/0805CZ	C0805
236	C114	C-0805	12P/0805CZ	C0805
237	C115	C-0805	100P	C0805
238	C132	C-0805	NC	C0805
239	C135	C-0805	10U/0805CZ	C0805
240	C140	C-0805	2U2/0805CZ	C0805
241	C148	C-0805	NC	C0805
242	C301	C-0805	10U/0805CZ	C0805
243	C309	C-0805	4U7/0805CZ	C0805
244	C310	C-0805	10U/0805CZ	C0805
245	C53	CD220U	220U/25V	CD220U/16V
246	C65	CD220U	220U/16V	CD220U/16V
247	C62	CD220UF/50V	220U/50V	CD220U/50V
248	J6	CR2032	CR2032	CR2032
249	U4	DS1302	DS1302Z	SOP-8
250	Q21	DTA143XE	NC	SOT-416

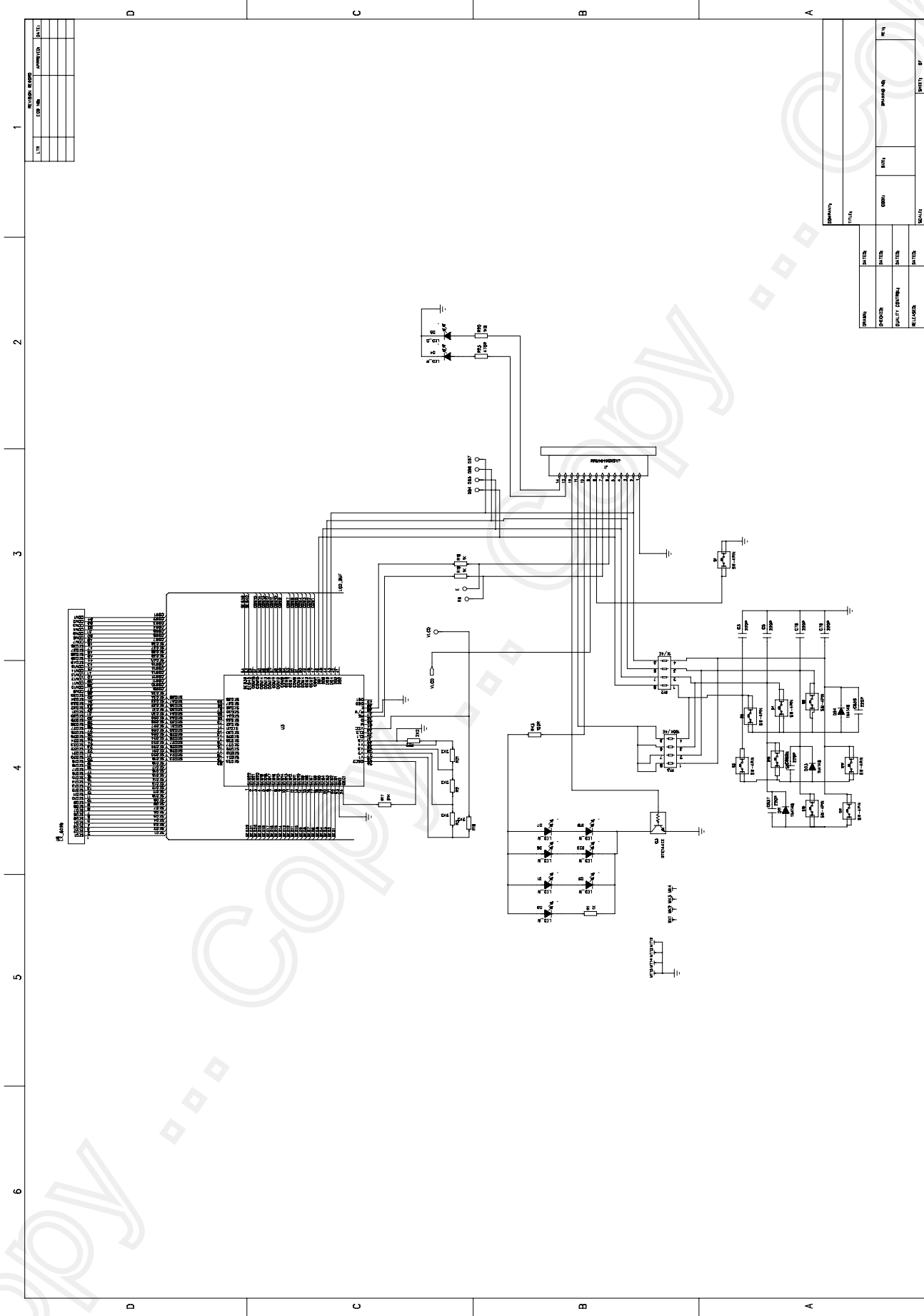
Item	Qty	PART-TYPE	Reference	PCB-TYPE
251	Q24	DTA143XE	DTA144EE	SOT-416
252	Q401	DTA143XE	DTA144EE	SOT-416
253	Q106	DTA144EE	DTA144EE	SOT-416
254	Q301	DTA144EE	DTA144EE	SOT-416
255	Q1	DTC114EE	DTC144EE	SOT-416
256	Q10	DTC114EE	DTC144EE	SOT-416
257	Q11	DTC114EE	2SK1824	SOT-416
258	Q17	DTC114EE	DTC144EE	SOT-416
259	Q20	DTC114EE	DTC144EE	SOT-416
260	Q302	DTC114EE	DTC114EE	SOT-416
261	Q303	DTC114EE	DTC114EE	SOT-416
262	Q12	DTC114TE	DTC144TE	SOT-416
263	Q19	DTC114TE	NC	SOT-416
264	Q101	DTC144EE	DTC144EE	SOT-416
265	Q9	DTC144TE	DTC144TE	SOT-416
266	D8	HSC277	KDS114E	SOD-523
267	D9	HSC277	KDS114E	SOD-523
268	D505	HSC277	KDS114E	SOD-523
269	D507	HSC277	KDS114E	SOD-523
270	HT2	HT9170-SOP	HT9170	SOP-18
271	J4	JACK-14P-1MM	JACK-14P	JACK-14P 1.0
272	J5	JACK-35PJ316		JACK-35PJ316
273	L22	L-4T	4T/1.6/0.4	L4T
274	L402	L-4T	4T/1.5/0.4	L4T
275	L513	L-4T	4T/1.5/0.4	L4T
276	L16	L-7T	6T/2.0/0.4	L7T
277	L17	L-8T9P3DR5	0.5/3.0/9.5TR	L8T9P3DR5
278	U2	L7808DPAK		L7808-DPAK
279	L19	LA-3T05	2T/2.0/0.5	LA3T05
280	L47	LA-3T05	2T/2.0/0.6	LA3T05
281	L21	LA-4T	4T/1.9/0.5	LA4T
282	L506	LA-4T	4T/1.9/0.5	LA4T
283	L508	LA-4T	4T/1.9/0.5	LA4T
284	L4	LA-5T	5T/2.0/0.5	LA5T
285	L18	LA-5T	5T/2.0/0.5	LA5T
286	L3	LA-6T	6T/2.1/0.5	LA6T
287	L11	LA-8T	10T/2.0/0.4	LA8T
288	L201	LA-8T	10T/2.0/0.4	LA8T
289	C103	LCB0603	CB601	L0603
290	L204	LCB0603	CB601	L0603
291	L1	LCH0603	100P	L0603
292	L5	LCH0603	CH22N	L0603
293	L6	LCH0603	CH220N	L0603
294	L8	LCH0603	CH100N	L0603
295	L9	LCH0603	CH220N	L0603
296	L10	LCH0603	CH15N	L0603
297	L12	LCH0603	NC	L0603
298	L13	LCH0603	NC	L0603
299	L14	LCH0603	CH100N	L0603
300	L15	LCH0603	CH100N	L0603

Item	Qty	PART-TYPE	Reference	PCB-TYPE
301	L202	LCH0603	CH22N	L0603
302	L203	LCH0603	CH220N	L0603
303	L205	LCH0603	CH100N	L0603
304	L206	LCH0603	CH100N	L0603
305	L401	LCH0603	CH22N	L0603
306	L403	LCH0603	CH22N	L0603
307	L601	LCH0603	CH220N	L0603
308	L2	LCH0805	CM1UH	L0805
309	L7	LCH0805	CM220N	L0805
310	U103	LM4558	LM4558	SOP-8
311	MK1	MARK1	MK1	MARK 1MM
312	MK2	MARK1	MK1	MARK 1MM
313	MK3	MARK1	MK1	MARK 1MM
314	MK4	MARK1	MK1	MARK 1MM
315	X3	MC 146	32.768KHz	MC 146
316	X4	MC 146	32.768KHz	MC 146
317	MT15	MT1412		MT 1413
318	MT16	MT1412		MT 1413
319	MT12	MT4022	MT1	MT 4022
320	MT13	MT4022	MT1	MT 4022
321	MT1	MT4528	MT1	MT 4528
322	MT2	MT4528	MT1	MT 4528
323	MT3	MT4528	MT1	MT 4528
324	MT4	MT4528	MT1	MT 4528
325	MT5	MT4528	MT1	MT 4528
326	MT6	MT4528	MT1	MT 4528
327	MT7	MT4528	MT1	MT 4528
328	MT8	MT4528	MT1	MT 4528
329	MT9	MT4528	MT1	MT 4528
330	MT10	MT4528	MT1	MT 4528
331	MT11	MT4528	MT1	MT 4528
332	MT14	MT4528	MT1	MT 4528
333	U301	NJM2904	NJM2904	SSOP-8
334	Q203	PBR951	PBR951	SOT-23
335	R1	R-0603	22K	R0603
336	R2	R-0603	47K	R0603
337	R3	R-0603	3K3	R0603
338	R4	R-0603	22K	R0603
339	R5	R-0603	5K1	R0603
340	R6	R-0603	3K3	R0603
341	R7	R-0603	10R	R0603
342	R8	R-0603	3K3	R0603
343	R9	R-0603	10K	R0603
344	R10	R-0603	47K	R0603
345	R11	R-0603	47K	R0603
346	R12	R-0603	10K	R0603
347	R13	R-0603	22K	R0603
348	R14	R-0603	NC	R0603
349	R15	R-0603	10K	R0603
350	R16	R-0603	18D	R0603

Item	Qty	PART-TYPE	Reference	PCB-TYPE
351	R17	R-0603	4K7	R0603
352	R18	R-0603	47K	R0603
353	R19	R-0603	100K	R0603
354	R20	R-0603	0R	R0603
355	R21	R-0603	10R	R0603
356	R22	R-0603	NC	R0603
357	R23	R-0603	510K	R0603
358	R25	R-0603	47K	R0603
359	R26	R-0603	4K7	R0603
360	R27	R-0603	NC	R0603
361	R28	R-0603	NC	R0603
362	R29	R-0603	10K	R0603
363	R30	R-0603	NC	R0603
364	R31	R-0603	NC	R0603
365	R32	R-0603	100R	R0603
366	R33	R-0603	1K	R0603
367	R34	R-0603	120K	R0603
368	R35	R-0603	120K	R0603
369	R37	R-0603	100K	R0603
370	R38	R-0603	5K1	R0603
371	R39	R-0603	0R	R0603
372	R42	R-0603	5K1	R0603
373	R44	R-0603	330R	R0603
374	R45	R-0603	10K	R0603
375	R46	R-0603	3K3	R0603
376	R48	R-0603	5K1	R0603
377	R49	R-0603	270R	R0603
378	R50	R-0603	5K1	R0603
379	R52	R-0603	5K1	R0603
380	R66	R-0603	5K1	R0603
381	R67	R-0603	10K	R0603
382	R68	R-0603	100R	R0603
383	R69	R-0603	680R	R0603
384	R70	R-0603	470P	R0603
385	R71	R-0603	150K	R0603
386	R72	R-0603	100K	R0603
387	R73	R-0603	47R	R0603
388	R74	R-0603	47K	R0603
389	R75	R-0603	12K	R0603
390	R76	R-0603	47R	R0603
391	R77	R-0603	270R	R0603
392	R78	R-0603	15K	R0603
393	R79	R-0603	10K	R0603
394	R97	R-0603	510K	R0603
395	R108	R-0603	4K7	R0603
396	R109	R-0603	2K	R0603
397	R119	R-0603	330K	R0603
398	R121	R-0603	0R	R0603
399	R124	R-0603	NC	R0603
400	R126	R-0603	100K	R0603

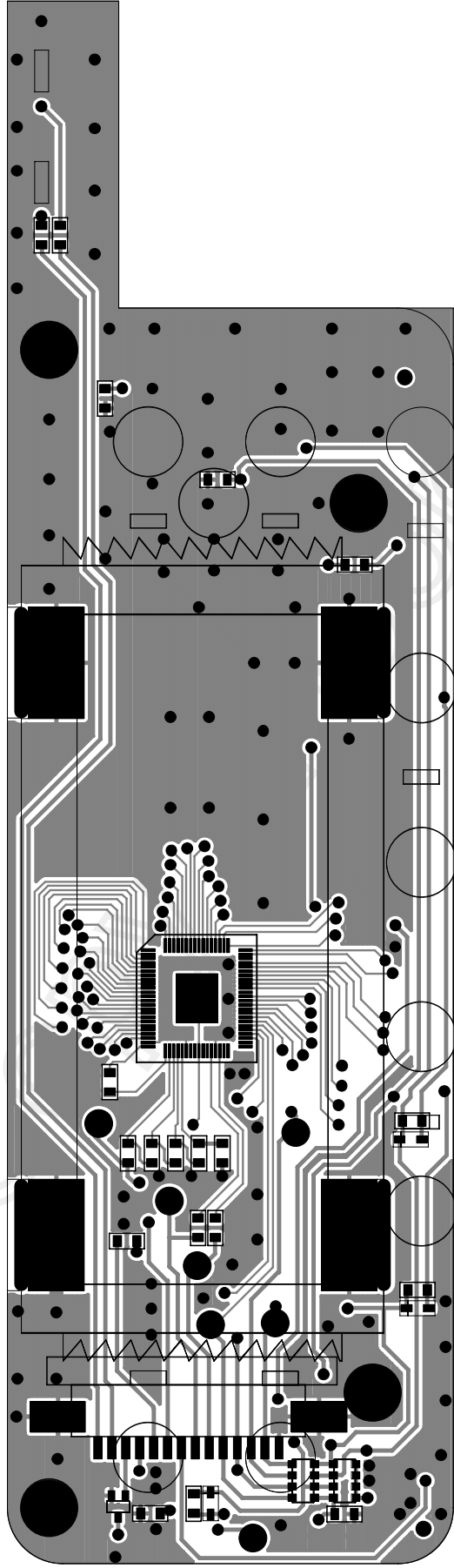
Item	Qty	PART-TYPE	Reference	PCB-TYPE
401	R127	R-0603	100K	R0603
402	R128	R-0603	NC	R0603
403	R129	R-0603	22K	R0603
404	R130	R-0603	22K	R0603
405	R131	R-0603	1M	R0603
406	R132	R-0603	33K	R0603
407	R133	R-0603	47K	R0603
408	R134	R-0603	0R	R0603
409	R135	R-0603	1K	R0603
410	R136	R-0603	1K	R0603
411	R138	R-0603	10K	R0603
412	R202	R-0603	47R	R0603
413	R204	R-0603	68K	R0603
414	R205	R-0603	82K	R0603
415	R206	R-0603	47R	R0603
416	R207	R-0603	47K	R0603
417	R208	R-0603	470P	R0603
418	R209	R-0603	560R	R0603
419	R210	R-0603	22R	R0603
420	R211	R-0603	680R	R0603
421	R212	R-0603	2K2	R0603
422	R213	R-0603	220R	R0603
423	R214	R-0603	680R	R0603
424	R215	R-0603	10K	R0603
425	R216	R-0603	5K1	R0603
426	R304	R-0603	150K	R0603
427	R305	R-0603	150K	R0603
428	R306	R-0603	150K	R0603
429	R307	R-0603	150K	R0603
430	R308	R-0603	150K	R0603
431	R309	R-0603	150K	R0603
432	R310	R-0603	10K	R0603
433	R311	R-0603	1M	R0603
434	R312	R-0603	47K	R0603
435	R313	R-0603	39K	R0603
436	R314	R-0603	2K2	R0603
437	R315	R-0603	100K	R0603
438	R316	R-0603	47K	R0603
439	R317	R-0603	10K	R0603
440	R323	R-0603	10K	R0603
441	R324	R-0603	10K	R0603
442	R403	R-0603	10K	R0603
443	R404	R-0603	15K	R0603
444	R502	R-0603	270R	R0603
445	R503	R-0603	270R	R0603
446	R603	R-0603	4K7	R0603
447	R604	R-0603	1K	R0603
448	R605	R-0603	330K	R0603
449	R606	R-0603	22K	R0603
450	R624	R-0603	10K	R0603

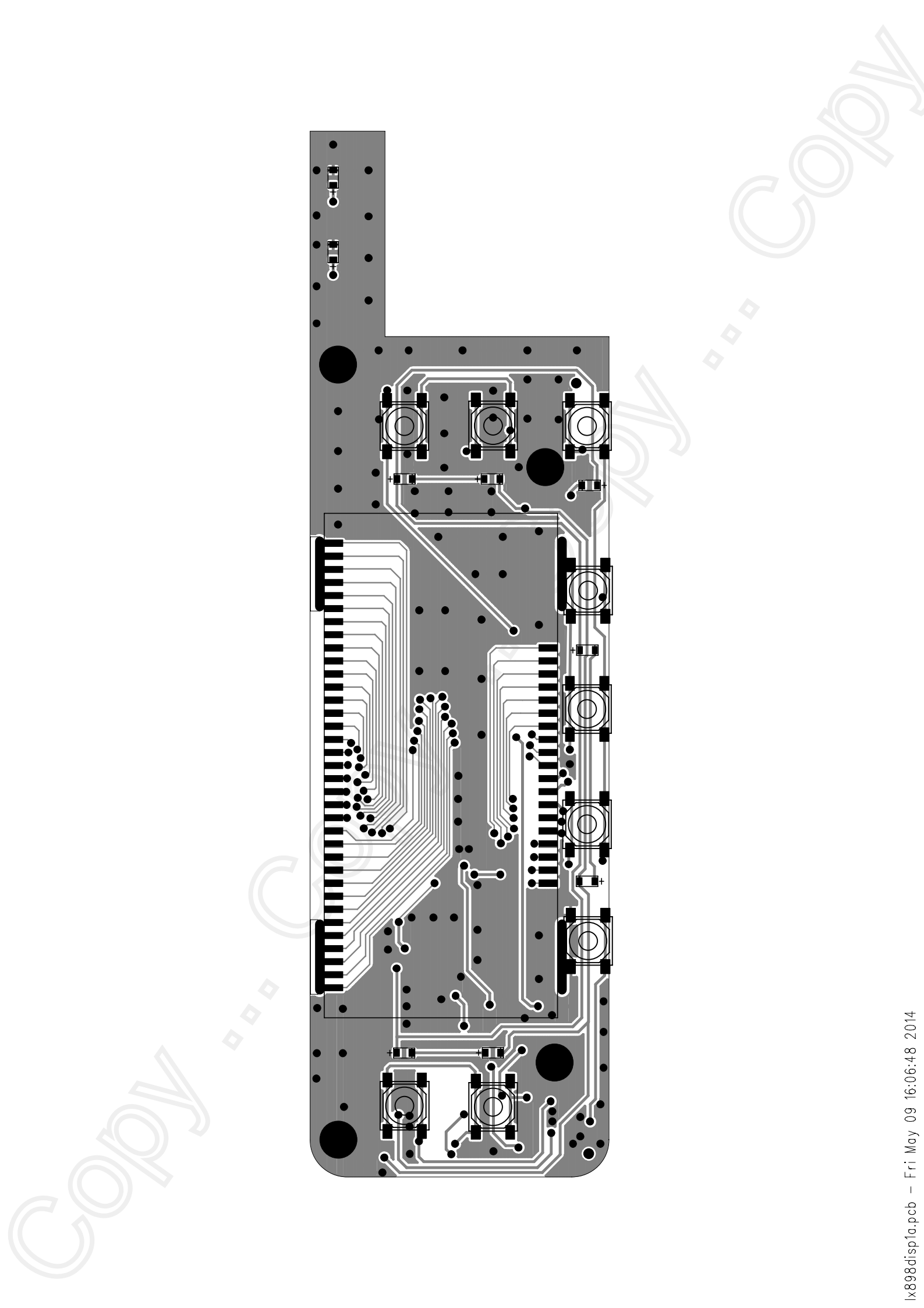
Item	Qty	PART-TYPE	Reference	PCB-TYPE
451	R625	R-0603	10K	R0603
452	R24	R-1206	R39/1206	R1206
453	R301	R-1206	R39/1206	R1206
454	R302	R-1206	R39/1206	R1206
455	R303	R-1206	R39/1206	R1206
456	R325	R-1206	R39/1206	R1206
457	U102	RDA1846	AT1846S	QFNJ-32
458	U601	RDA5802	RDA5802N	QFNJ-24
459	U1	RJ45A	RJ45	RJ45A
460	RT1	RT1815A	RT1815A	LQFP48
461	J1	SPK-2P		SPK-2
462	X2	TCXO-3225	NC	TCXO-3225
463	X1	TCXO-5032	TCXO-5032	TCXO-5032
464	U6	TDA2822	UTC2822	SOP-8
465	J2	VV898 TT		VV898S TT
466	Q5	X32678L	NC	X32768L
467	Q25	X32678L	NC	X32768L
468	Q30	XC62FP3302	2SB1301	SOT-89
469	XC62FP1	XC62FP3302	XC6201P50	SOT-89
470	XC62FP2	XC62FP3302	XC6201P33	SOT-89

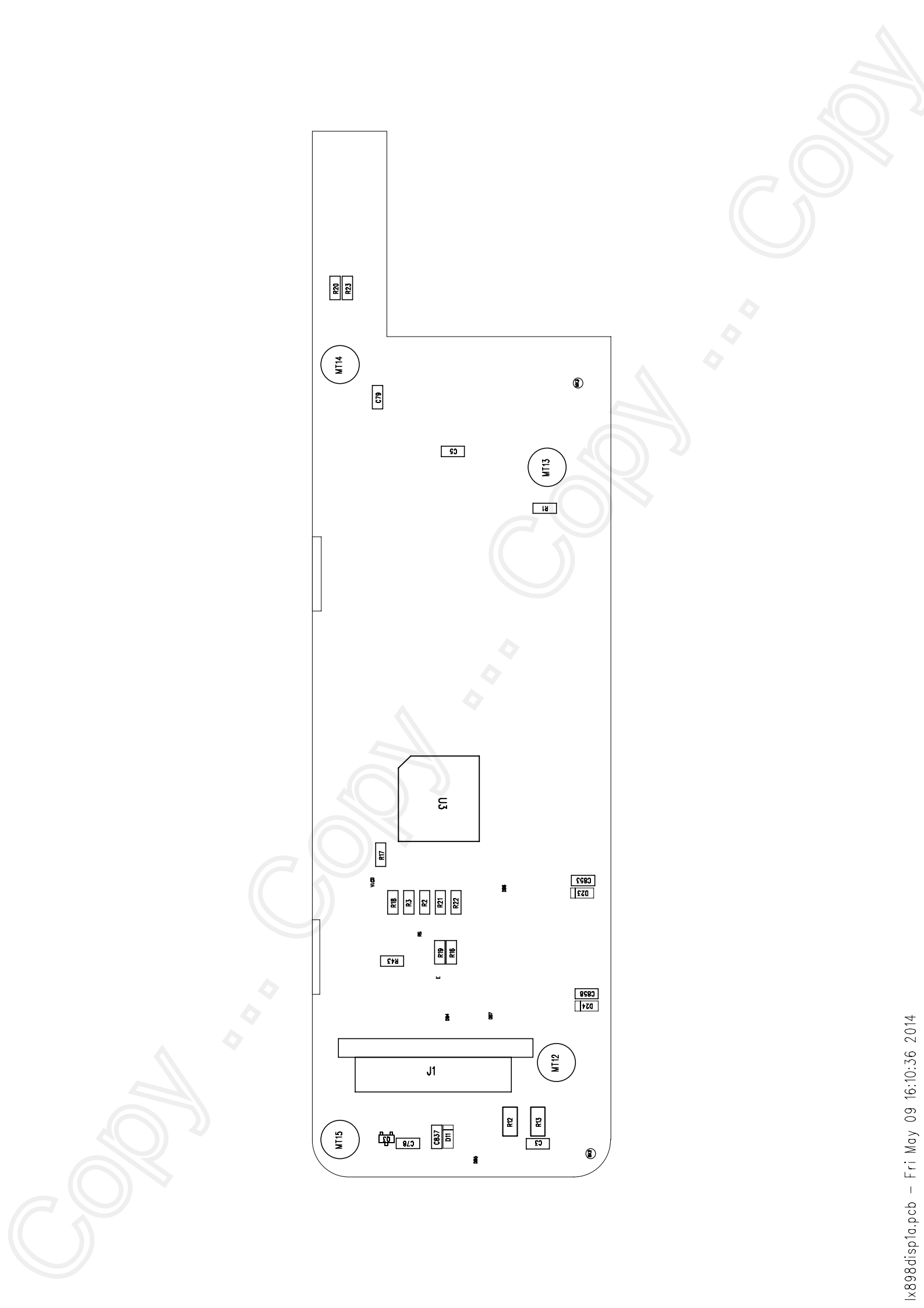


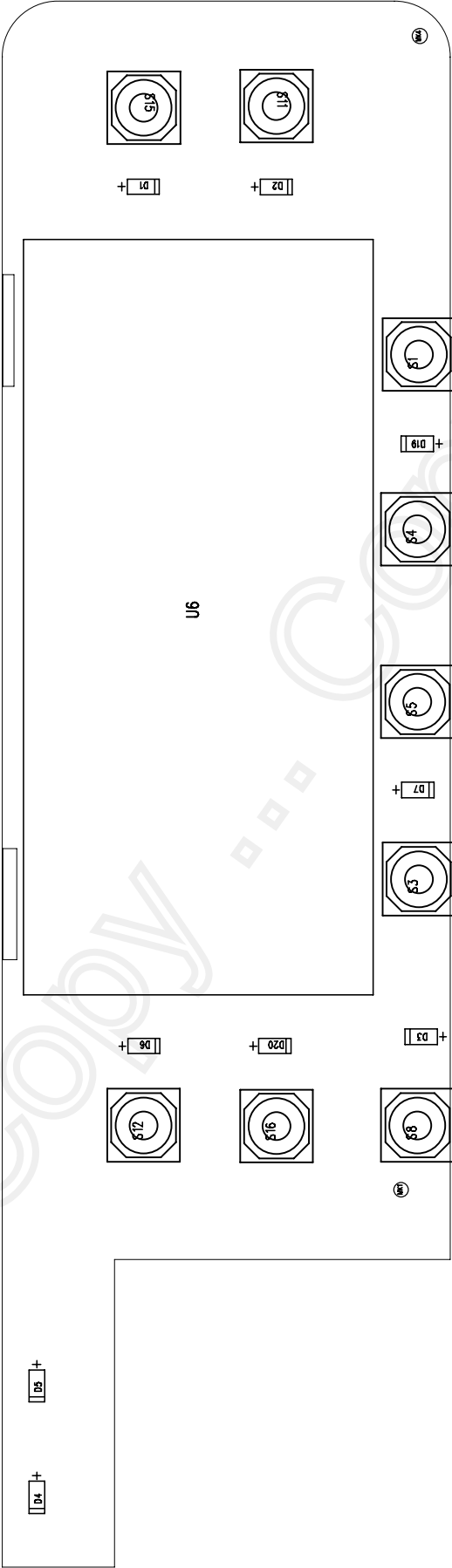
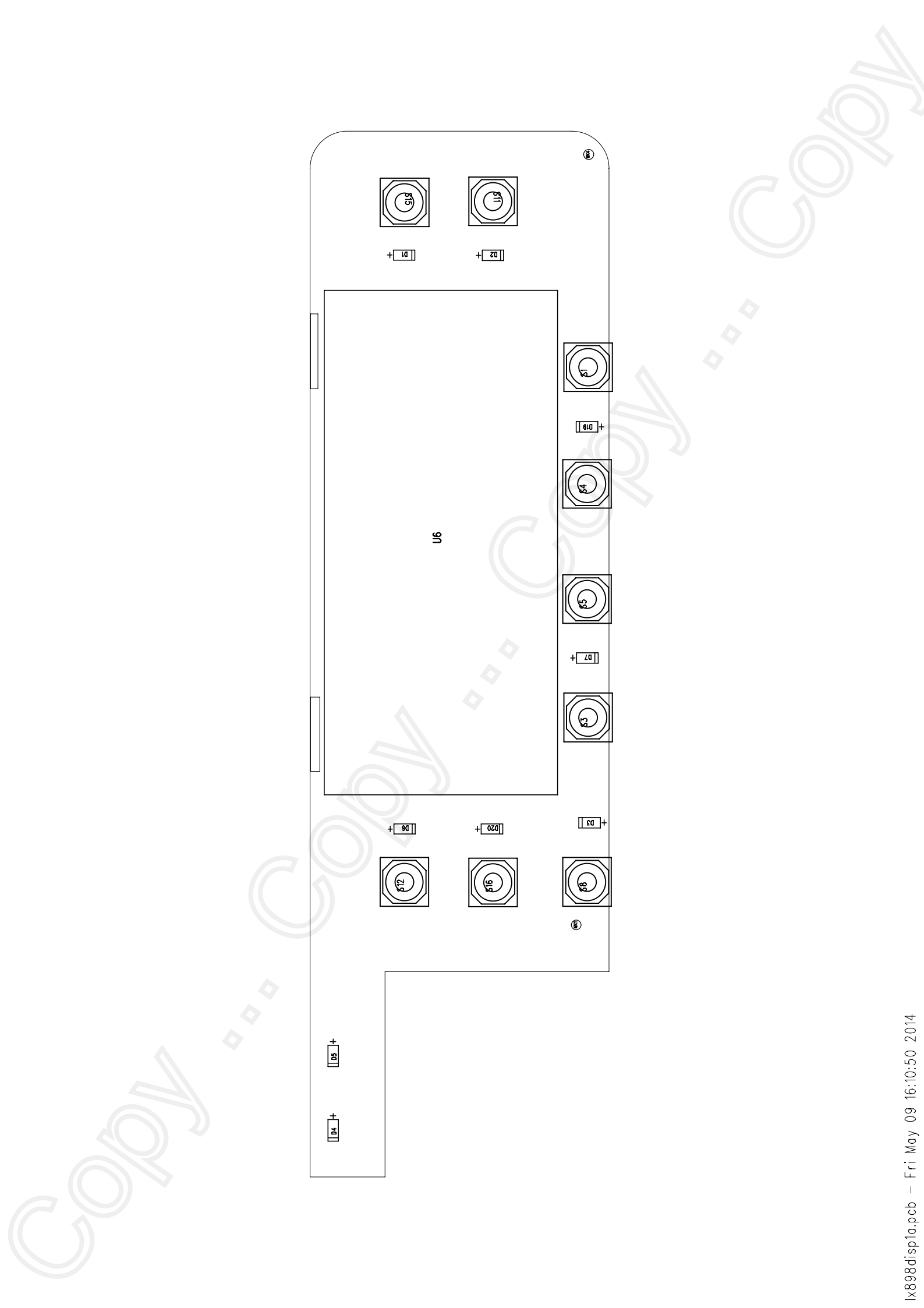
DATE	DESIGNER	APPROVED	DATE

PROPERTY			
DATE	BY	REVISION NO.	REV.









Item	Qty	PART-TYPE	Reference	PCB-TYPE
1	C3	C-0603	220P	C0603
2	C5	C-0603	220P	C0603
3	C78	C-0603	220P	C0603
4	C79	C-0603	220P	C0603
5	C837	C-0603	220P	C0603
6	C853	C-0603	220P	C0603
7	C858	C-0603	220P	C0603
8	Q3	DTC144TE	DTC144EE	SOT-416
9	U3	HD44780D		44780B
10	J1	JACK-14P-	JACK-14P	JACK-14P_1.0
11	D1	LED_1	LED_W	LED0603
12	D2	LED_1	LED_W	LED0603
13	D3	LED_1	LED_W	LED0603
14	D4	LED_1	LED_R	LED0603
15	D5	LED_1	LED_G	LED0603
16	D6	LED_1	LED_W	LED0603
17	D7	LED_1	LED_W	LED0603
18	D19	LED_1	LED_W	LED0603
19	D20	LED_1	LED_W	LED0603
20	U6	LX_802B		R1500_LCD
21	D11	MA2S111	1N4148	SOD-523
22	D23	MA2S111	1N4148	SOD-523
23	D24	MA2S111	1N4148	SOD-523
24	MK1	MARK1	MK1	MARK_1MM
25	MK2	MARK1	MK1	MARK_1MM
26	MK3	MARK1	MK1	MARK_1MM
27	MK4	MARK1	MK1	MARK_1MM
28	MT12	MT4025	MT1	MT_4025
29	MT13	MT4025	MT1	MT_4025
30	MT14	MT4025	MT1	MT_4025
31	MT15	MT4025	MT1	MT_4025
32	R1	R-0603	1K	R0603
33	R2	R-0603	2K2	R0603
34	R3	R-0603	2K2	R0603
35	R16	R-0603	1K	R0603
36	R17	R-0603	91K	R0603
37	R18	R-0603	2K2	R0603
38	R19	R-0603	1K	R0603
39	R20	R-0603	1K8	R0603
40	R21	R-0603	2K2	R0603
41	R22	R-0603	2K2	R0603
42	R23	R-0603	470R	R0603
43	R43	R-0603	100R	R0603
44	R12	R-4E0603	1K/4E	R4E_0603
45	R13	R-4E0603	100K/4E	R4E_0603
46	S1	SW-4PIN	SW-4PIN	SW-4P_5252

47 S3	SW-4PIN	SW-4PIN	SW-4P_5252
48 S4	SW-4PIN	SW-4PIN	SW-4P_5252
49 S5	SW-4PIN	SW-4PIN	SW-4P_5252
50 S8	SW-4PIN	SW-4PIN	SW-4P_5252
51 S11	SW-4PIN	SW-4PIN	SW-4P_5252
52 S12	SW-4PIN	SW-4PIN	SW-4P_5252
53 S15	SW-4PIN	SW-4PIN	SW-4P_5252
54 S16	SW-4PIN	SW-4PIN	SW-4P_5252
55 DB4	TP		1CPIN
56 DB5	TP		1CPIN
57 DB6	TP		1CPIN
58 DB7	TP		1CPIN
59 E	TP		1CPIN
60 RS	TP		1CPIN
61 VLCD	TP		1CPIN